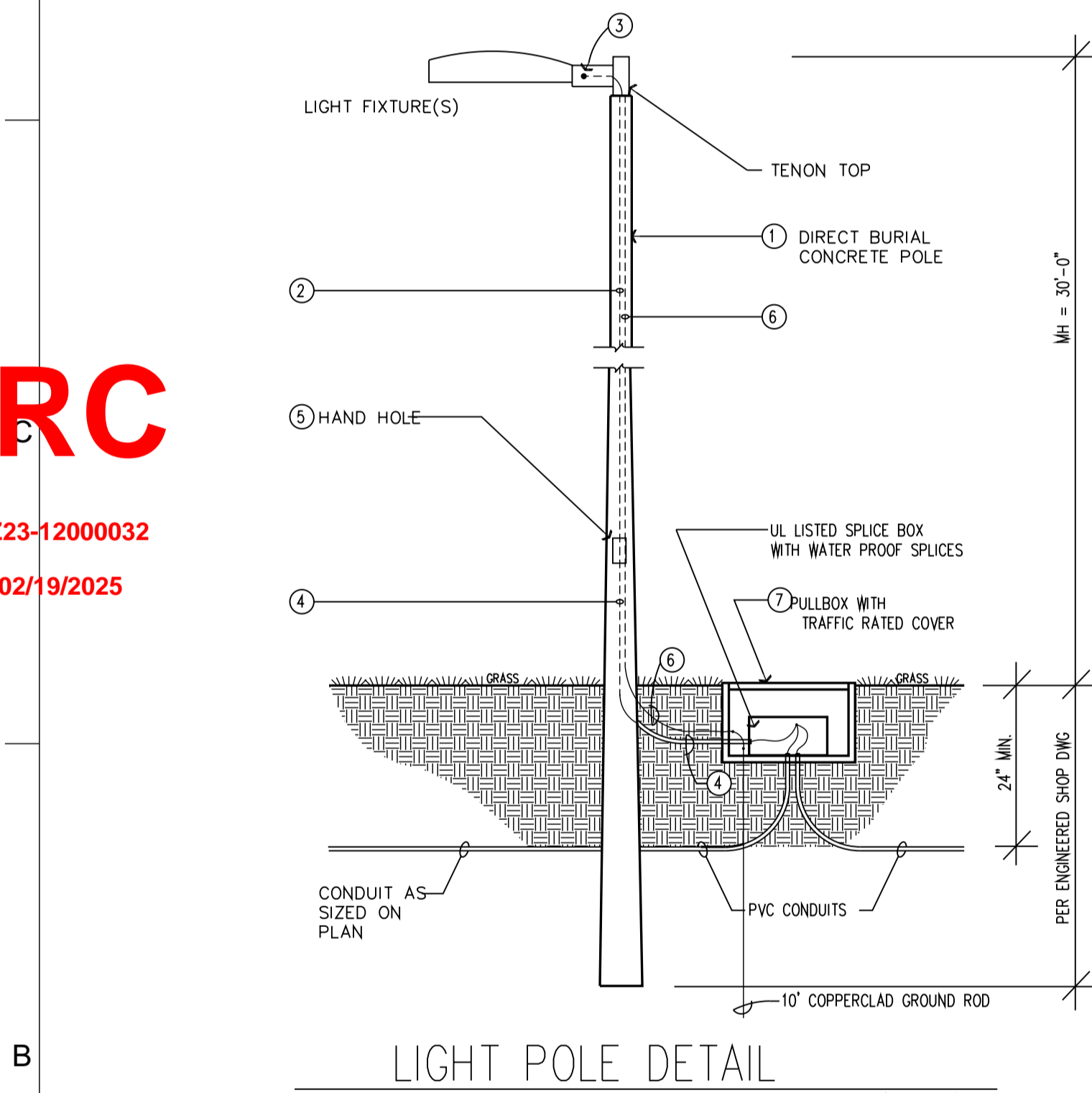
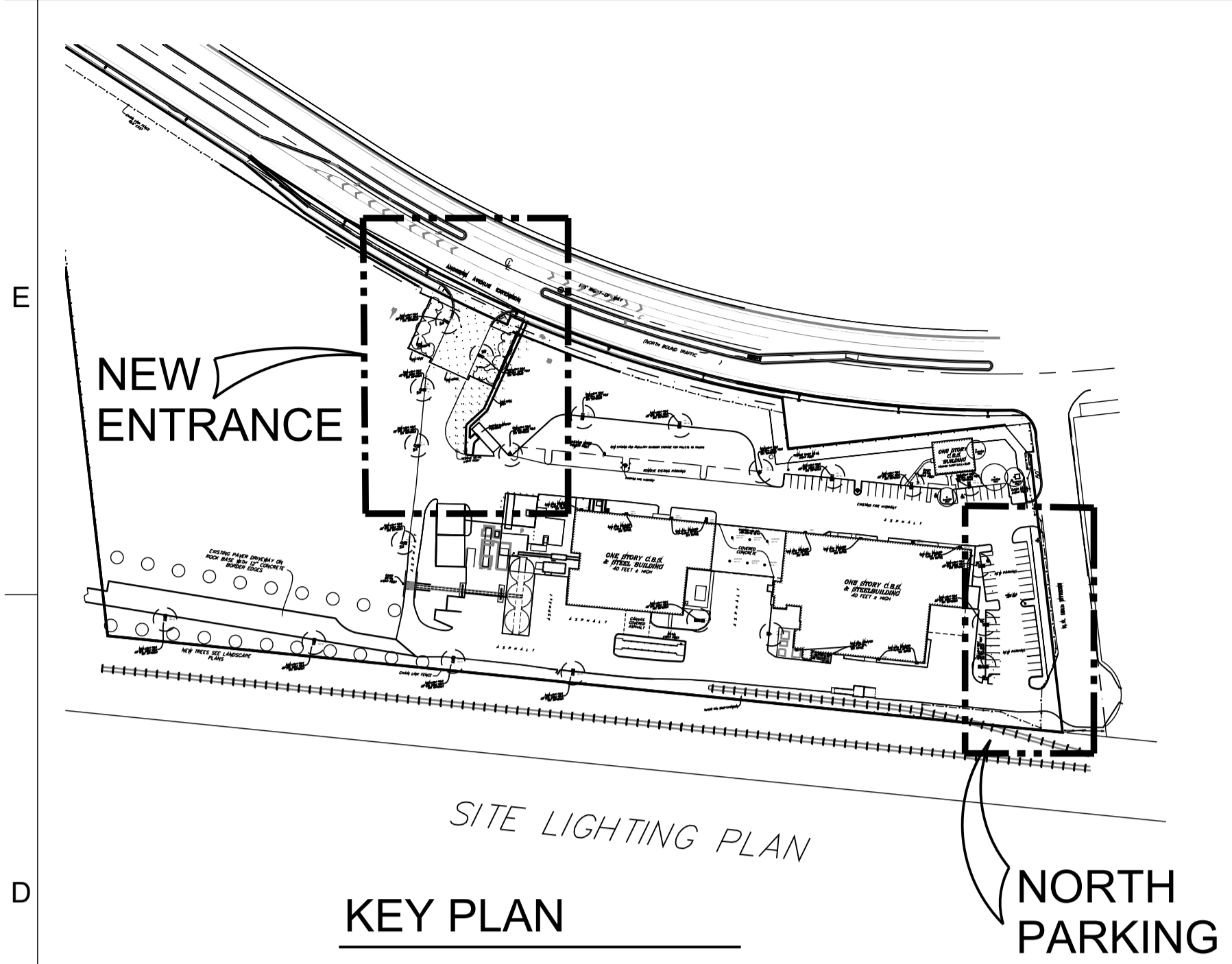


IT IS A VIOLATION OF THE LAW FOR ANY PERSON UNLESS ACTING UNDER THE DIRECTION OF A LICENSED ARCHITECT TO ALTER THESE PLANS AND SPECIFICATIONS. THE DOCUMENT CONTAINS PROPERTY INFORMATION AND SHALL BE KEPT IN A SAFE PLACE AND NOT REPRODUCED, OR ITS CONTENTS DISCLOSED, IN WHOLE OR IN PART, WITHOUT THE PRIOR WRITTEN CONSENT OF GALLO HERBERT ARCHITECTS. CONTRACTOR(S) SHALL VERIFY EXISTING CONDITIONS AND CORRELATE DIMENSIONS PRIOR TO PROVIDING THE WORK DETAILED IN THESE DRAWINGS, AND SHALL PROMPTLY NOTIFY THE DESIGNER OF ANY DISCREPANCIES.

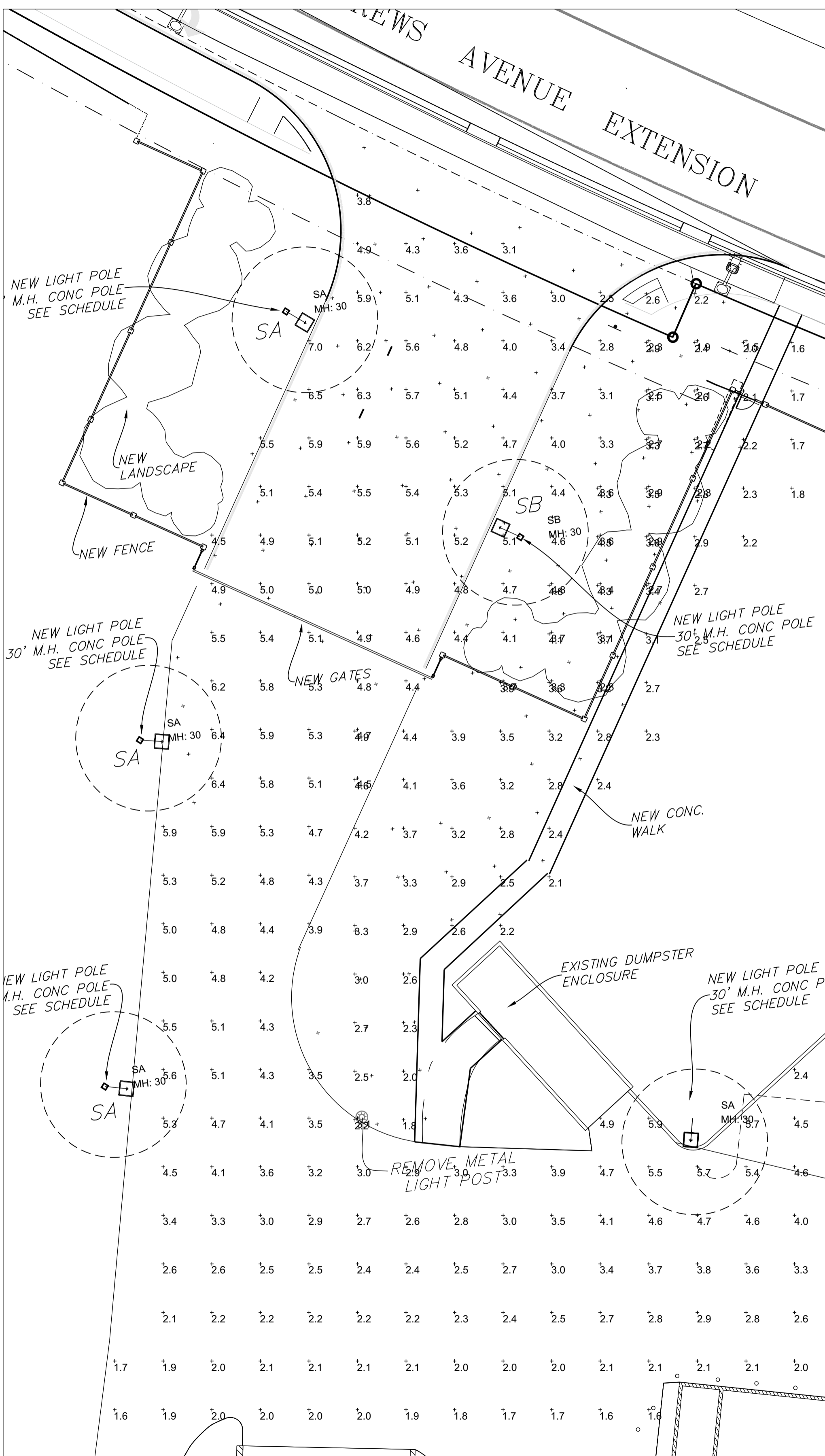
**DRC**  
PZ23-12000032  
02/19/2025

COPYRIGHT 2024 GALLO HERBERT ARCHITECTS



- STANDARD LIGHTING POLE DETAIL
- (1) LIGHTING POLE. THE MANUFACTURER IS TO PROVIDE CERTIFICATION BY FLORIDA PE, SHOWING WIND LOAD RATING OF 170 MPH WITH SPECIFIED FIXTURES INSTALLED. THE FINAL POLE SET IS TO BE DETERMINED BY THE PROFESSIONAL ENGINEER.
  - (2) INTERNAL WIRING. INTERNAL WIRING TO BE IN UL LISTED CONDUITS, INSIDE POLE. SEE NOTE 3.
  - (3) LIGHT FIXTURE CONNECTIONS. REFER TO LIGHT MANUFACTURER FOR REQUIREMENTS, INCLUDING TEMPERATURE REQUIREMENTS (COMMONLY 150C). CONDUCTORS TO BE UL LISTED "FIXTURE" CONDUCTORS. (UL "RECOGNIZED" APPLIANCE WIRES NOT PERMITTED.) OBTAIN BUILDING DEPARTMENT APPROVAL FOR CONDUCTORS, CONNECTORS, AND ACCESSIBILITY.
  - (4) CONDUITS. CONDUITS BELOW HAND HOLE IN POLE TO BE UL LISTED WITH "BRANCH CIRCUIT" THIN CONDUCTORS.
  - (5) HAND HOLE. HAND HOLE WITH UL LISTED BOX CAST IN POLE WITH WATERPROOF SPLICES.
  - (6) GROUND WIRE IN POLE. CONNECT BOTTOM TO #4 BARE GROUND CONDUCTOR. CONNECT TOP TO GROUND LUG IN FIXTURES.
  - (7) TRAFFIC RATED PULL BOX. HIGH STRENGTH COMPOSITE CONSTRUCTION RATED FOR DESIGN LOAD OF 5,000 LBS OVER A 10" SQUARE. COVER LETTERING = "LIGHTING". DO NOT PLACE IN PAVED AREA, KEEP IN GRASSED AREAS. QUARTZITE COMPOSITE PK STYLE. 1-800-346-3087
  - (8) MUCK. IF SOFT SOILS ARE FOUND ON THE PROPERTY, THIS POLE DESIGN WILL BE MODIFIED TO ACCOMMODATE. NOTIFY ENGINEER IMMEDIATELY.
  - (9) SITE CONDITIONS. IF SITE CONDITIONS ARE DISCOVERED WHICH REQUIRE ANY POLE (S) TO BE MOVED OVER 4 FEET, NOTIFY THE ENGINEER IMMEDIATELY.

**3 LIGHT POLE DETAIL**  
SCALE 1/4" = 1'-0"



**2 PARTIAL SITE LIGHTS PHOTOMETRIC PLAN NEW ENTRANCE**  
SCALE 1/16" = 1'-0" FOR FURTHER INFORMATION, SEE PLANS BY WINNINGHAM & FRADLEY, ENGINEERS, AND MCLAGHLIN ENGINEERING FOR SURVEY.



**1 PARTIAL SITE LIGHT PHOTOMETRIC PLAN NORTH PARKING**  
SCALE 1/16" = 1'-0"



AA26001731  
[SEAL]  
WILLIAM J. GALLO FL AR0008440  
**Brian Herbert** Digitally signed by Brian Herbert  
Date: 2024.10.09 15:06:57 -04'00'

BRIAN P. HERBERT FL AR0015474  
PROJECT  
**DRC**  
BONSAL TURN  
PZ23-12000032  
12/04/2024  
1200 W 24TH ST  
POMPAHO BEACH FL 33069

REVISIONS		
No.	Description	Date
B	MINOR SITE SBMTL	07-19-2023
	MINOR SITE SBMTL	06-25-2024
	MINOR SITE SBMTL	09-30-2024

PROJECT STATUS  
MINOR SITE PLAN SUBMITTAL  
DATE  
JUNE 25, 2024  
PROJECT NUMBER  
2123  
SCALE  
AS SHOWN  
DRAWN BY  
JET  
CHECKED BY  
[ ]  
DRAWING TITLE  
SITE LIGHTING PHOTOMETRIC PLAN  
DRAWING NUMBER  
SL-1